

# Presenting and Charting Your Idea

This activity will allow members to:

- Present their research and ideas on how the club can best make an impact.
- Reflect on what service needs they are passionate about helping.



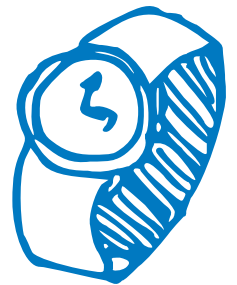
Materials needed:

- One worksheet per member (print it at [buildersclub.org/IDEA](http://buildersclub.org/IDEA))
- Pens or pencils
- Markers
- 12 to 15 sheets of flip-chart paper
- One sticker per member

How to lead this activity:

Based on the information and observations each member has completed, it's time for each member to make a presentation on the service need that he or she believes the club should focus on.

1. Officers should arrive for the meeting at least 10 minutes early to prepare.
2. On each flip-chart paper, write one of the service need categories—you can find them at the bottom of the Presenting Your Idea worksheet.
3. Place the pages around the meeting room, in places that are easy to see.
4. Congratulate members on their hard work. Each member now should reflect on all previous activities and present his or her choice.
5. Ask each member to complete a Present Your Idea worksheet.
6. After everyone finishes the worksheet, each member should give a two-minute presentation on his or her service idea. A club officer should go first, so the other members see how it works and feel comfortable with the two-minute time limit.
7. After each presentation, the member should place a sticker on the paper listing that particular service need category. This is a fun way for everyone to see where the club's passions and interests lie.
8. When everyone has presented, a club officer should point out which service needs got the most interest. Explain that the flip-chart pages will be used at the next club meeting, when members will talk more about service needs and vote for which one to do a project for.



Don't forget to remind members to use accountable talk when sharing comments or asking questions.



# Presenting Your Idea

Now that you have collected ideas for service needs, it's time for your club to start thinking about which one fits best. Use this guide to make a presentation—so you can tell the club why they should choose your favorite.

The service need I would like our club to choose is \_\_\_\_\_.

Here are three things that I already know about this service need:

Here's how our club might make a difference to this service need:

## Service and category:

- |   |   |
|---|---|
| <input type="checkbox"/> Education and literacy | <input type="checkbox"/> Veterans and military    |
| <input type="checkbox"/> Animal care            | <input type="checkbox"/> Disaster relief          |
| <input type="checkbox"/> Hunger                 | <input type="checkbox"/> Housing and homelessness |
| <input type="checkbox"/> Bully prevention       | <input type="checkbox"/> Domestic violence        |
| <input type="checkbox"/> Environment            | <input type="checkbox"/> Equal rights             |
| <input type="checkbox"/> Elder care             | <input type="checkbox"/> Families in need         |
| <input type="checkbox"/> Health and wellness    | <input type="checkbox"/> Other                    |